

AT AUCTION

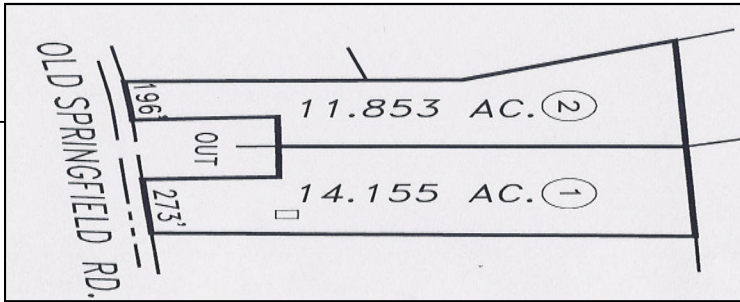
SATURDAY - MAY 14, 2011 - 10am CDT

26 Acres offered in 2 Tracts - Machinery - Richpond - South Warren School District

New Holland TN 60A Tractor with Bush Hog Brand Loader - 535 Hours

1545 OLD SPRINGFIELD ROAD - WOODBURN, KY

PARTIAL LIST: Denmark Broadcaster, International - 7' Rotary Mower - 4' Rotary Mower - 7' Sidewinder Rotary Mower - Woods L-59 Finishing Mower Deck - 3 pt Post Hole Auger - 3/3pt Hay Forks - 6' Grader Blade - 6' Bog Disc - 5' Bog Disc - 6' Pull-Type Disc - 7' Pull-Type Disc - Universal Head Catcher - 6 1/2 x 16' Tag-A-Long Trailer - Boom Sprayer - Fuel tank on Stand - Trail Blazer Sickle Bar Mower - Galvanized Water Trough - Calf Feeders - Old Barn Lumber and much more. **SALE PROCEDURE:** Sale will start promptly at 10a.m. CDT - Selling AS-IS **TERMS:** Machinery cash or good check in full day of sale. **REAL ESTATE:** 15% Non-refundable deposit down day of sale - balance due with general warranty deed on or before 30 days. 7% Buyers premium added to final bid to establish contract price. 2011 Taxes prorated from deliver of deed. MAKE YOUR FINANCIAL ARRANGEMENTS PRIOR TO BIDDING. **DIRECTIONS:** From Bowling Green KY & Natcher Parkway take Exit 4 - 31-W South 8 miles to 240 (Woodburn KY) turn right go West on 240 1/2 mile turn left Old Springfield Rd AUCTION BANNERS POSTED.



SALE PREVIEW
SUNDAY MAY 1st
2 - 4 pm

AT AUCTION

SATURDAY - MAY 21, 2011 - 10am CDT

325 STATE STREET - BOWLING GREEN, KY

2 STORY DUPLEX RESIDENCE - 50 X 206 - ALLEY ACCESS - ZONED RM-4

SALE PROCEDURE: Real Estate will sell promptly at 10 a.m. **TERMS:** 15% Non-Refundable deposit down day of sale. Balance due with General Warranty Deed on or before 30 days. 7% Buyers Premium added to final bid to establish contract price. **TAXES:** 2011 prorated from delivery of deed. Possession w/deed. Make your financial arrangements prior to bidding. Sale is not contingent on financing. Selling AS - IS condition.

SCHOOLS: L.C. Curry - Dishman McGinnis - Bowling Green Jr. High - Bowling Green High. **AUCTIONEERS COMMENTS:** This property is near area of Revitalization - River Front Park - Shopping Areas - Hospital and convenient to I-65 and other major thoroughfares. Located in an established neighborhood. This property lends itself to many usages with proper zoning. **DIRECTIONS:** Located on State Street 5 blocks north of Fountain Square near US 31W By-Pass & Old Louisville Rd. Auction banners posted. Auction firm not responsible for accidents. Announcements made day of sale take precedence over all advertising. Home was built prior to 1978 and may contain lead-base paint. Prospective purchasers will have 10 days prior to sale to inspect and sign inspection waiver date of sale. Auction firm not responsible for accidents. Announcements made day of sale take precedence over all advertising. **SALES PERSONELL AVAILABE TO SHOW PROPERTY AT YOUR CONVENIENCE**

OPEN HOUSE - SUNDAY MAY 15th 2 - 4 pm



Bud Greenup
Real Estate
& Auction Co.

1218 High Street Bowling Green, KY 42101
P.O. Drawer 220 Smiths Grove, KY 42171
TN Firm 16864 TAL 1630



Barry Claypool, Broker Auctioneer
Terry Hale, Realtor, App. Auctioneer
270-843-3366 800-452-3091
www.budgreenup.com
barry@budgreenup.com